



Caucus Update

Metropolitan Louisville Women's Political Caucus

January 2006

2006 Officers

President

Carolyn Franklin
(502) 491-6091
carolynf11@yahoo.com

Vice President

Nicole V. Candler
(502) 550-0252
Nicole.candler@insightbb.com

Secretary

Carolyn Shaw
(502) 966-4890
caocarolynshaw@hotmail.com

Treasurer

Bobbi Jo Weber
(502) 361-0503
bobbijo@wesselinsurance.com

Immediate Past President

Joyce Woosley
(502) 968-3194
woosley@peoplepc.com

Policy Council

Jennifer Moore
(502) 456-9936
jmoore_snr@yahoo.com

Membership

Virginia L. Woodward
(502) 361-4866
viriniawoodward04@yahoo.com

Publicity

Brenda Gunn
(502) 585-5390
sistahsoul415@yahoo.com

Members-at-Large

Geri Anderson
(502) 893-8221
geriglaw@yahoo.com

Margaret Harris

(502) 774-3659
silverapple1@bellsouth.net

Janice Yankey

(502) 968-2551
janicelee@insightbb.com

A Message From President Carolyn Franklin

Dear Member:

The purpose and mission of MLWPC is to increase women's participation in the political process and to identify, recruit, train and support women for election and appointment to public office. We offer our endorsement to male and female candidates who adhere to these principles and goals.

With this mission in mind, the Caucus is united for political action. Recent events surrounding Virginia Woodward's pursuit of a State Senate seat has taught us many lessons, but most importantly, we see how critical it is to enforce our mission.

Our shock and grief should be acknowledged. Yet, we should also recognize the powerful support Caucus members have lent Virginia and Jennifer Moore in their legal battle to place the most qualified candidate. I would like to thank everyone who has contacted the Caucus to express support.

Many of you have asked what you can do to ensure a better outcome for future women candidates. You can take action. You can be a change agent by participating in the mission of this organization.

The lineup of speakers for 2006 will allow our members to better understand issues facing today's women and today's political candidates. Invite a friend to the Caucus meetings and be sure to attend. Increasing our understanding is the first step towards creating change.

To steal a line from the *West Wing*, "The people that make the decisions are the ones that show up." I invite you to be a part of MLWPC and to be a part of moving all of us forward.

Carolyn Franklin

MLWPC President

MLWPC: Why now more than ever before

Just when you think there is not one more thing that can shake the foundations of your faith, that justice and right will always win out...a day like Saturday, January 7, comes along.

This infamous date is when the seven Legislative District Chairs from the 37th State Senate District voted for a candidate to run in the special election called to fill that Senate seat. Yes, that is the seat I have fought to rightfully fill for over 14 months.

Like a bad dream when you can't awaken fast enough, forces were at work long before the meeting.

January 7, is not about the loss of a nomination. It is about whether all of us, women in particular, will be at the political power table.

This should be a rallying cry to renew our effort. We must have more thinking people at the table to be apart of the decision making.

continued on page 2

The Metropolitan Louisville Women's Political Caucus works to increase women's participation in the political process and to identify, recruit, train and support feminist women for election and appointment to public office.

MLWPC Principles

- To strive for equality for all women
- To ensure reproductive freedom
- To achieve quality dependent care
- To eradicate sexism, racism, anti-Semitism, ageism, ableism, violence, poverty and discrimination on the basis of religion or sexual orientation

MLWPC Goals

- Encourage women to be active and effective in all aspects of the political process
- Support the efforts of KWPC-endorsed women who run for or are appointed to office
- Organize women around the state for political action on women's issues
- Initiate, lobby and monitor legislation which guarantees women equal protection under the law and for programs and measures which benefit women



The Metropolitan Louisville Women's Political Caucus uses the Greek symbol for women to form five circles, representing the five races, intertwined to symbolize unity of purpose and that together we can achieve anything.

Powerful Examples

Nicole V. Candler

If you haven't set a resolution for 2006, or you've already abandoned other 2006 goals, consider setting the resolution to change your perspective. What we read and see on television or in the movies, greatly impacts our perspective. Make 2006 the year you see some important issues from another person's perspective. The following books and movies are some recommendations to get you started.

"Our Endangered Values: America's Moral Crisis" by Jimmy Carter

Even when precedence shows former presidents hold criticisms of current leaders, Jimmy Carter strikes the debate of our country's global and domestic policies. The Nobel Peace Prize-winner, regarded for his commanding communication about human rights and government policy, warns of the impact our nation's infusion of religion and government, the division of rich and poor and war will have for years to come.

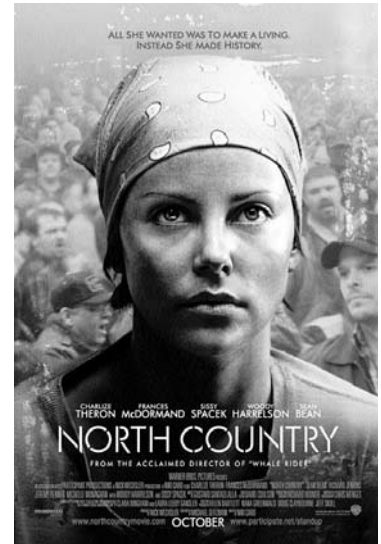
North Country

Charlize Theron plays Josie, a divorced mother and Minnesota miner in a story inspired by the book *"Class Action: The Landmark Case That Changed Sexual Harassment Law,"* by Clara Bingham and Laura Leedy Gansler. In a male-dominated industry, Josie speaks out against sexual harassment and finds herself challenged by her family, her men and women co-workers and herself. Her experience leads to the first class-action lawsuit for sexual harassment. Theron and Frances McDormand were nominated for 2006 Golden Globes.

Other Powerful Examples:

"The Secret Life of Bees" and *"The Mermaid Chair"* by Sue Monk Kidd

Powerful Examples is a regular column of Caucus Update. We invite others to contribute book, television and movie recommendations that exemplify powerful women and changes in our political culture. To submit a review, contact Nicole V. Candler at nicole.candler@insightbb.com.

**Why now, continued**

My fight is a small one compared to the battle women have fought for many years. In 1972, the Kentucky Women Political Caucus and MLWPC were created to increase women's participation in the political process and to identify, recruit, train and support feminist women for election and appointment to public office.

This year, the MLWPC will be joining with many others to create a deafening voice for change. Join us as we change the process of selecting, training and empowering women.

Choose to be an active MLWPC member by paying your dues. Choose to be an active MLWPC member through your attendance at monthly meetings designed to provide both a topical and educational opportunity. Choose to be an active MLWPC member by voting. Choose to be an active MLWPC member by funding or volunteering for an endorsed candidate. And finally, choose to be an active MLWPC member by running for office. We need you.

In closing, thank you to each and every one of you who supported my efforts to first seek, then be reelected, and finally run again for the 37th State Senate seat. I fought a tenacious and honorable battle. Each failure is just one step closer to winning.

Virginia L. Woodward

MLWPC Membership

2006 Meeting Schedule

All meetings are held the fourth Thursday of the month at the Holiday Inn at Second Street and Broadway from 5:30 to 7 p.m. unless otherwise noted. *Meetings are FREE and open to all members, public and guests.* Dinner is optional. Please make reservations by contacting Nicole V. Candler at (502) 550-0252 or nicole.candler@insightbb.com. *No meetings in June, July, August and November.*

January 26 Religion and Politics: Strange Bed Fellow?

Panel discussion of local religious leaders concerning today's intrusive environment of politics in the name of religion. Our guest panelists include: Rector of St. Matthews Episcopal Church, Rev. Canon Lucinda Laird and Editor of "Voice for Choice", newsletter of the Kentucky Religious Coalition for Reproductive Choice, Rev. Gilbert Schroerlucke. The panel will be moderated by the Honorable Eleanor Jordan, former Jefferson County State Representative.

February 23 Book Signing & Discussion

Nationally-known author, Charlene Hampton Holloway was the youngest African-American in Kentucky to march with Dr. Martin Luther King, Jr. in 1961 and has donated priceless memorabilia to the African-American Heritage Museum. She is author of "Whitlock's Compositions". A portion of the book sales will benefit MLWPC.

March 30 Women, Treason and the Right to Speak Out - Treason or Not

Author and historian, Dr. Judi Jennings

April 27 Legislative Update

A panel of legislators discuss the 2006 General Assembly

May 25 What is Louisville Doing About Women and Homelessness?

Cathe Dukystra, Executive Director of Project Women

September 28 Candidates' Forum

October 26 Annual meeting and election of officers

December Installation of officers and reception

Hillary Clinton visits Louisville

On December 2nd, Senator Hillary Rodham Clinton visited with more than 2,000 people including MLWPC members Nicole Candler, Margaret Harris, Nelle Horlander, Melinda Neimann, Bobbi Jo Weber and Virginia Woodward at the Louisville International Convention Center.



New Addition

Congratulations to member Deanna Brady and her husband Chris. Their son, Nathanael Baxter was born December 3.

Community Calendar

January 28, 6:30 p.m.
Religious Coalition
Reproductive Choice, Annual
Roe v. Wade Dinner
 Fourth Avenue United Methodist Church
 Contact (866) 686-0988 or info@krcrc.org for reservations.
 Dinner is \$35 a person.

Feb. 8, noon
BPW River City
 Jefferson Club
 Contact Mary Lewis at 499-4420 or lewism@msdlouky.org for reservations and details. Meetings are held monthly on the second Wednesday. Lunch is \$20.

Feb. 9, 6:30 p.m.
Jefferson County NOW
 First Unitarian Church, Fourth St. & York
 Contact 499-4419 or info@jefferson-countynow.org for details. Monthly meetings are held on the second Thursday.

March 8, noon
BPW River City
 Jefferson Club
 Contact Mary Lewis at 499-4420 or lewism@msdlouky.org for reservations and details. Meetings are held monthly on the second Wednesday. Lunch is \$20.

March 9, 6:30 p.m.
Jefferson County NOW
 First Unitarian Church, Fourth St. & York
 Contact 499-4419 or info@jefferson-countynow.org for details. Monthly meetings are held on the second Thursday.

Aug. 26, 9 a.m - 3 p.m.
KWPC, Campaign School
 Lexington
 Details to be announced.

Send us your announcements

The Caucus Update can help promote programming and announcements for other organizations. Please send event notices and information to nicole.candler@insightbb.com

2006 Membership Renewal

Metropolitan Louisville Women's Political Caucus

Name _____

Address _____

City _____ State _____ Zip _____

Phone (H) _____ (W) _____

E-mail _____

Help us save on expenses by providing your e-mail address. Newsletter and meeting announcements will soon be sent to our membership via e-mail.

Party Affiliation _____ Occupation _____

___ Benefactor Member, \$125

___ Governing Member plus KWPC and NWPC membership, \$80

___ Governing Member plus KWPC membership, \$40

___ Limited-income or Student Member, \$25

Please make checks payable to MLWPC. Send to 1906 Hillcircle Road, Louisville, KY 40214

MLWPC
1906 Hillcircle Road
Louisville, KY 40214

The Metropolitan Louisville Women's Political Caucus works to increase women's participation in the political process and to identify, recruit, train and support feminist women for election and appointment to public office.